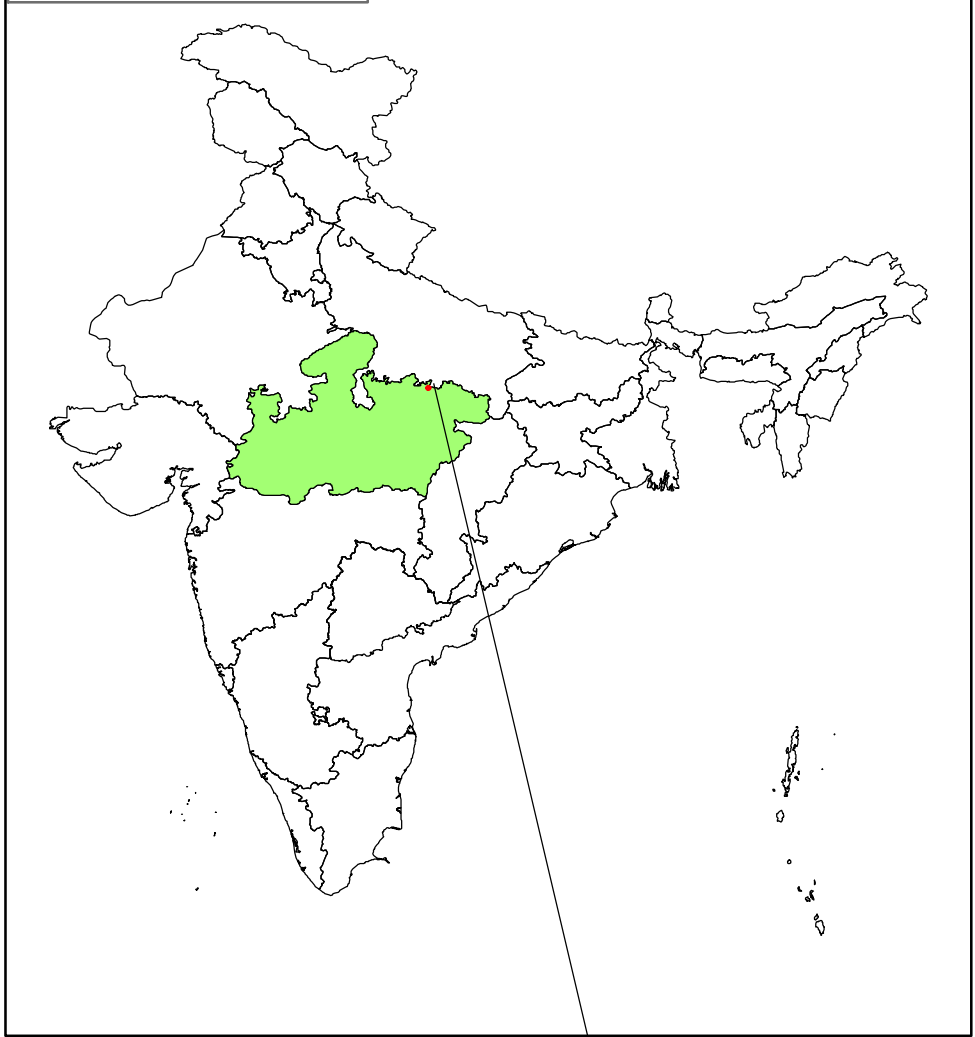
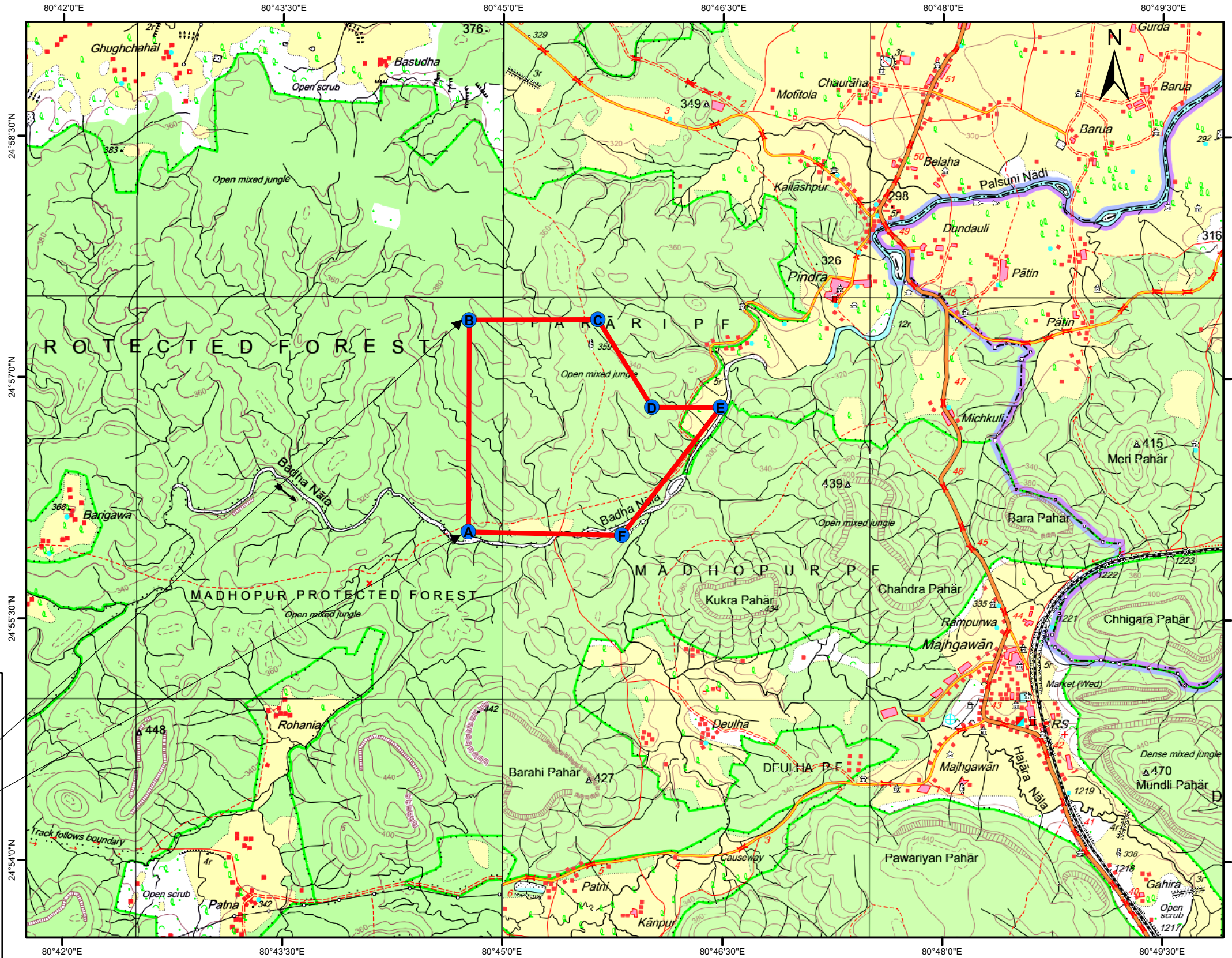
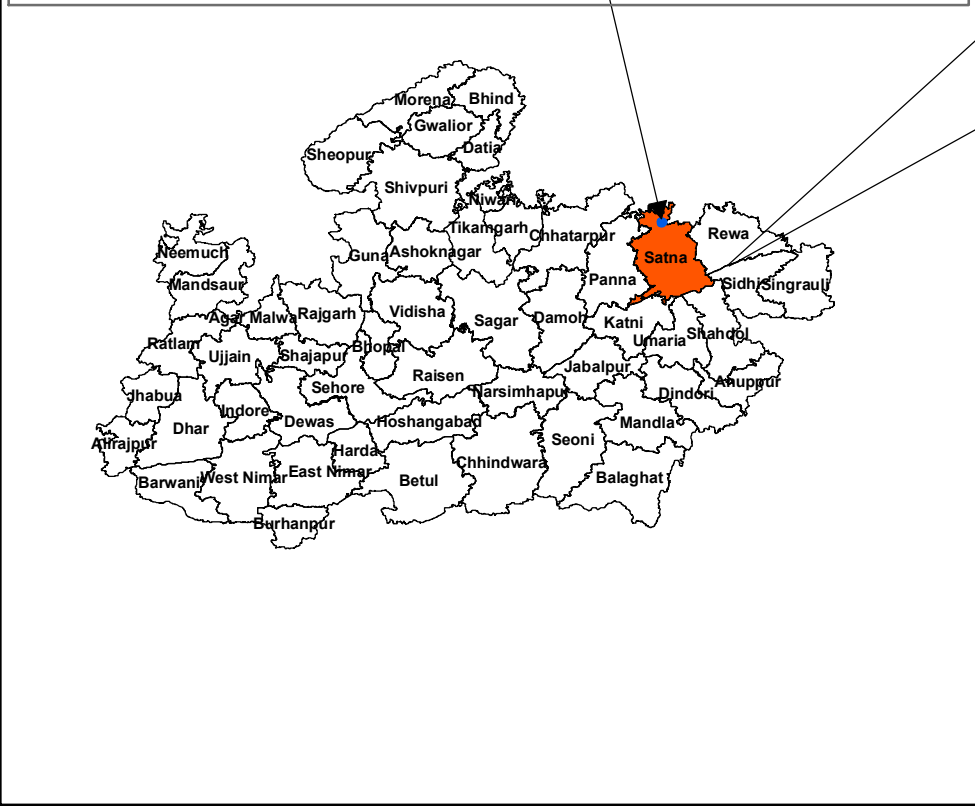



MAP OF INDIA



DISTRICT MAP OF MADHYA PRADESH



| LABEL | UTM (WGS84) - ZONE 44 R | | GCS (DMS) | | Elevation |
|-------|-------------------------|--------------|----------------|----------------|-----------|
| | EASTING (m) | NORTHING (m) | LATITUDE (N) | LONGITUDE (E) | |
| A | 474365.063 | 2757669.697 | 24° 56' 2.60" | 80° 44' 45.95" | 311.486 |
| B | 474372.551 | 2760099.531 | 24° 57' 21.60" | 80° 44' 46.06" | 372.723 |
| C | 475851.349 | 2760101.346 | 24° 57' 21.74" | 80° 45' 38.79" | 363.226 |
| D | 476465.601 | 2759097.464 | 24° 56' 49.14" | 80° 46' 0.76" | 343.899 |
| E | 477254.177 | 2759093.323 | 24° 56' 49.05" | 80° 46' 28.88" | 302.594 |
| F | 476123.106 | 2757629.439 | 24° 56' 1.39" | 80° 45' 48.64" | 329.583 |



MINERAL EXPLORATION AND CONSULTANCY LIMITED
(Formerly Mineral Exploration Corporation Limited)

LOCATION MAP

JHARI BLOCK, (EXTENT 5.1 sq km)
SATNA-DISTRICT, MADHYA PRADESH

TOPOSHEET NO: 63D/13

MAP NOT TO SCALE

Data Processed at:
Non-Coal Geological Report Cell,
Exploration Division,
MECL, Nagpur.

M.E.C.L/EXPL/NOV-2025

PLATE-I

1